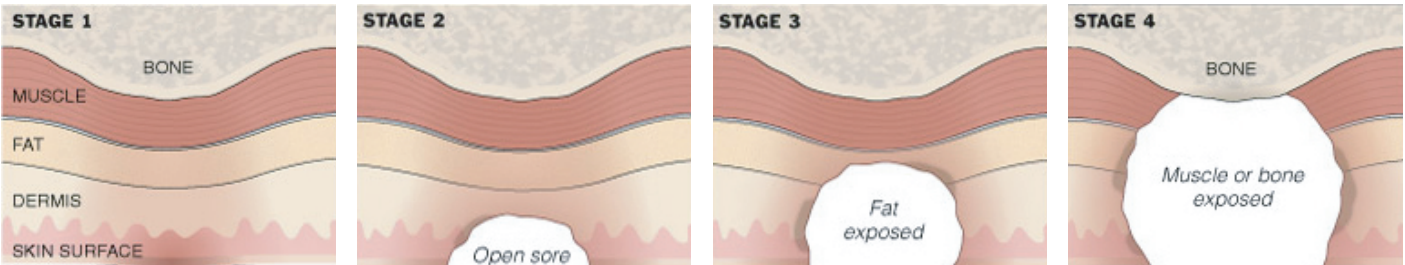


SALUTE RDX

The **Salute RDX** mattress system provides alternating pressure therapy with micro low air loss to aid patients who are at risk of developing pressure ulcers or have existing stage 1, 2, 3, or 4 ulcers. Caregiver friendly, the Salute RDX is an affordable, therapeutic surface solution for any clinical care setting.



Optional Raised Bolster Cover available for added patient safety. Bolster cover has center access providing easy ingress and egress.

MASTER CONTROL UNIT	
Dimension:	(L)13.5"x (W)7.3"x (H)8.3"
Weight:	7.1 lbs
Rating Voltage:	110-120 volts
Max Current:	0.2A max.
Rating Frequency:	60Hz
Cycle Time:	5, 10, 15, 20 mins
	Static function
	3 in 1 alternation
Min/Max Pressure:	12~47 mmHg +/- 6 mmHg
Air flow rate:	> 6 l/min
Protection Type:	Class I, Type BF
Low Pressure Alarm:	Visual / Audio
Power Failure Alarm:	Visual / Audio
	Maintenance service LED indicator

MATTRESS REPLACEMENT	
Model No:	Salute RDX
Dimensions:	(L)80"x (W)36"x (H)10"
Weight:	25.3 lbs
Weight Capacity:	500 lbs
Cell Material:	Black Nylon with PU coating
	Cell in cell design to stay inflated during power outage
Cell Number:	18 cells
Cover Material:	Blue Nylon with PU coating finish
Base Material:	Black Polyester with PVC coating
	CPR Quick Release System
	Cable Management System on bottom cover
HCPSC Code	E0277

SALUTE RDX

Provides you, the caregiver, with peace of mind, and your patient with world class care and comfort

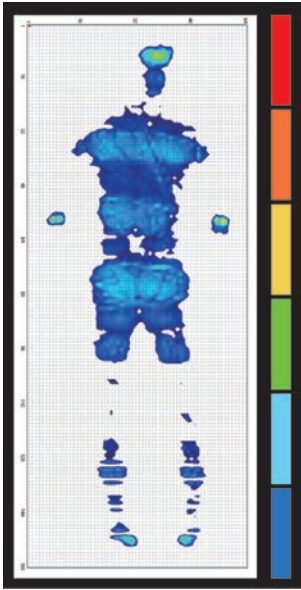


Perfect for
patients and
caregivers

Nylon covered bottom
cover for friction and
noise reduction when
raising bed's head pan

Effective micro low
air loss for moisture
management

Slimline pump design
is unobstructive



PRESSURE MAPPING

Salute RDX provides constant low pressure by redistributing the patient's pressure over a greater area than a standard mattress.

**SALUTE
RDX**

- Interchangeable air cell design provides easy cleaning and minimizes the proliferation of bacteria
- The Salute RDX employs 8" air bladders with cell in cell design (4.5" of therapy, 3.5" of static air), to provide therapeutic alternating pressure and also allow the mattress to stay inflated in a power outage.
- The Salute RDX replacement mattress can accommodate patient weights up to 500 lbs



provides extra softness in the last 5 air cells to provide protection for patient's fragile heels

- Modular design ensures ease of use and cleaning

Salute RDX is your
partner in prevention
and treatment of
pressure ulcers

Cable management
system keeps electrical
cables off floor for
caregiver and patient
safety

CPR quick release
system deflates the
system within 20
seconds



Spring loaded hooks
snap to fit your bed's
footboard



8 adjustable comfort settings
provide different levels of
comfort depending on the
patient's therapy requirement.

3-in-1 alternating pressure
covers 66% of patient's body
(vs. 50% on 2 in 1 systems) to
provide a more comfortable
yet still effective therapy

The Power Failure alarm warns
in case of power outage.

Service LED and alarm indicator is a friendly
reminder for advising caregiver to send back control
unit to certified technician for annual inspection.



provides
further therapy and comfort
by decreasing pressure in
patient's heel area.

